

NORTH CAROLINA SOCIETY OF EYE PHYSICIANS AND SURGEONS 2016 ANNUAL MEETING

Featured Speakers:

Cindy Bradford, MD, President-Elect, American Academy of Ophthalmology

John Clarkson, MD, Director, American Board of Ophthalmology

Duke, UNC and Wake Forest Ophthalmology Department Chairs

September 23-24, 2016 • Grandover Resort • Greensboro, NC
10.25 CME Hours!



This continuing medical education activity is jointly provided by the North Carolina Society of Eye Physicians and Surgeons and Southern Regional Area Health Education Center

OVERVIEW

Activity Description and Target Audience

The target audience for this meeting includes ophthalmologists in private practice and in academic medicine, residents, fellows, and students, physician assistants, and nursing staff. This educational activity will update practitioners on the latest medical knowledge available from medical literature, clinical experience and research. This year's meeting will feature presentations by each of the three North Carolina ophthalmology department chairs on their fields of expertise, and a panel discussion by the chairs on "Training Future Leaders in Ophthalmology." Additionally, Dr. Cindy Bradford, President-Elect of the AAO, will present an Academy update and discuss the importance of state society membership. The meeting will conclude with optional Retina and Oculoplastics case conferences, open to all registrants.

Educational Objectives

At the conclusion of this educational activity, participants should be able to:

- Recognize non-compliance in patients, describe strategies to address this challenge, and assess ways to optimize care in these patients to improve patient safety and health results.
- Review the clinical manifestations that may help to distinguish a malignant ocular melanoma from a benign choroidal nevus.
- Explain the goals of Maintenance of Certification (MOC) and discuss how MOC can be tailored to enhance physician knowledge and competence.
- Identify glaucoma disease features that may impact population subgroups disproportionately.
- Discuss patient care options in treating diabetic macular edema, specifically addressing the more recent option of intravitreal implants for sustained release of steroid medication.
- Discuss the importance of OCT in glaucoma detection and management and review important tips for interpretation of OCT results (such as in patients with high myopia and other anatomic variations).
- List three practice pitfalls to avoid in management of pediatric and neuro-ophthalmology patients.
- Discuss systemic risks of glaucoma medications in pediatric patients and review surgical techniques available for the care of pediatric glaucoma.
- Discuss the techniques to transplant the inner layers of the cornea, DSEK and DMEK, and explain how this impacts the management of patients with Fuchs' endothelial corneal dystrophy and other forms of corneal decompensation.
- List three take-away lessons from your case conference experience (Retina and/or Oculoplastics).

Credit Statement

The Southern Regional AHEC designates this live activity for a maximum of 10.25 *AMA PRA Category 1 credits™*. Physicians should claim only the credit commensurate with the extent of their participation in the activity.

Accreditation

This activity has been planned and implemented in accordance with the Essentials and Standards of the North Carolina Medical Society through the joint providership of the Southern Regional AHEC and the North Carolina Society of Eye Physicians and Surgeons. The Southern Regional AHEC is accredited by the NCMS to provide continuing medical education for physicians.

Additional Credit

Other health professionals will receive Southern Regional AHEC CEU and/or contact hours and a certificate of attendance from an *AMA PRA Category 1™* activity. These certificates are accepted by the NC boards for physician assistants, nurse practitioners, and nurses. License requirements are subject to change. Southern Regional AHEC recommends that participants contact their licensing boards with specific questions. Southern Regional AHEC will provide 1.0 Continuing Education Units (10.25 contact hours) to participants upon the completion of this activity.

Disclosure Statement

The Southern Regional AHEC adheres to ACCME Essential Areas and Policies regarding industry support of continuing medical education. Disclosure of faculty/planning committee members and commercial relationships will be made known at the activity. Speakers are also expected to openly disclose a discussion of any off-label, experimental, or investigational use of drugs or devices in their presentations.

Meeting Registration

The registration fee is \$200 for member physicians, \$325 for non-member physicians or PharmDs, \$100 for emeritus/retired physicians, and \$100 for mid-level providers. Residents, fellows and medical students may attend free of charge. Registration fees include the meeting sessions including the optional case conferences, the Friday evening reception and dinner for the participant, continental breakfast, breaks and lunch on Saturday. You may register securely online at <http://www.cvent.com/d/yfq6n5>, or complete the form in this brochure and return it via fax or mail prior to August 26. After August 26, registration fees will increase.

Deadline / Registration Cancellation

Please note that refunds of registration fees will not be made after Friday, September 16. Refunds, less \$25, will be made for cancellations received prior to that date.

Accommodations: Reserve Your Room by August 26

Conveniently and centrally located just off Interstate 85, the four-diamond Grandover Resort features a European-style spa, two golf courses, tennis and racquetball courts, fitness center, jogging trail, fine dining restaurant, and more! For information and directions, go to www.grandover.com/resort. For reservations, call (800) 472-6301 and mention NCSEPS to receive the special group rate of just \$183 plus taxes, per night.

Attire

Attire for the meeting is business casual.

Americans with Disabilities Act

The NCSEPS is fully committed to the principle of equal educational opportunities for all individuals and does not discriminate on the basis of any characteristics protected by federal or state law. If you require any of the auxiliary aids or services identified in the Americans with Disabilities Act in order to participate in this conference, please call the NCSEPS at (919) 833-3836 no later than ten business days before the date of the activity.

JCAHPO Meeting

JCAHPO will hold a meeting for ophthalmic technicians on Friday and Saturday in conjunction with the NCSEPS Annual Meeting. For more information, visit www.jcahpo.org, or call (800) 284-3937.

Questions

If you have any questions about the 2016 Annual Meeting, or need assistance, please contact the NCSEPS office at (919) 833-3836 or (800) 722-1350, or nlowe@ncmedsoc.org.



SCHEDULE

Friday, September 23

2:30pm-6:00pm

Registration

3:00pm

Announcements and
Introductions
(**Sara E. Stoneburner, MD**,
President & Program Chair)

3:05pm

The Noncompliant Patient: Strategies
to Prevent a Malpractice Suit
(**Chip Holmes, JD**)

4:05pm

Update on the ABO, including Recertification (**John Clarkson, MD**)

5:00pm-6:15pm

Welcome Reception / Networking Hub

6:15pm-8:00pm

Dinner Program
Dinner Presentation: Glaucoma Care in West Africa: Is it a Losing Battle?
(**Leon Herndon, MD**)



Saturday, September 24

7:00am-12:00pm

Registration

7:00am-8:00am

Continental Breakfast / Networking Hub

8:00am-4:00pm

Scientific Session

8:00am

Announcements and Introductions (**Sara E. Stoneburner, MD**)

8:05am

Melanoma Update, and Possible North Carolina Cluster
(**Kathleen "Kitty" Gordon, MD**)

8:40am

Tips from the Top: Diabetic Macular Edema 2016: More Choices,
Better Outcomes (**Craig Greven, MD**, Wake Forest)



Saturday, September 24 (continued)

9:15am	Tips from the Top: I Wish I Hadn't Done That! Lessons Learned the Hard Way (Edward Buckley, MD , Duke)
9:50am	Break / Networking Hub
10:20am	Tips from the Top: OCT for Glaucoma: Red and Green Disease (Donald Budenz, MD, MPH)
10:55am	Ophthalmology Department Chair Panel Discussion - Training Future Leaders in Ophthalmology: Present Challenges and Vision for the Future (Drs. Greven, Buckley and Budenz)
11:30am	Lunch (included in registration fee)
12:30pm	AAO Update and State Society Membership: Why Should We Care? (Cindy Bradford, MD)
1:10pm	Cornea Update: DMEK vs. DSEK (Matthew Giegengack, MD)
1:45pm	Legislative Advocacy Update (Connie Wilson, BA)
2:15pm	Business Meeting (no credit will be awarded) (Sara Stoneburner, MD)
2:45pm	Break / Networking Hub
3:15pm	Childhood Glaucoma: Armed with New Weapons for an Old Foe -- Have the Odds Changed? (Sharon Freedman, MD)
3:50pm	Announcement of Resident Poster Winners and Wrap Up
4:00pm-6:00pm	Optional Case Conference Sessions - Open to all registrants: Retina (NC Retina Club) (Odette Houghton, MD , moderator) Oculoplastics (Jonathan Dutton, MD , moderator)
6:00pm	Adjourn

PROGRAM FACULTY

Sara E. Stoneburner, MD - *President & Program Chair*

Cindy Bradford, MD

President-Elect

American Academy of Ophthalmology
Dean A. McGee Eye Surgery Center,
University of Oklahoma

Edward Buckley, MD

Chair, Department of Ophthalmology
Duke University School of Medicine

Donald L. Budenz, MD, MPH

Chair, Department of Ophthalmology
UNC School of Medicine

John Clarkson, MD

Director,
American Board of Ophthalmology

Sharon Freedman, MD

Duke Eye Center

Case Conference Moderators:

Odette Houghton, MD (UNC) - Retina

Jonathan Dutton, MD (UNC) - Oculoplastics

Matthew Giegengack, MD

Wake Forest University Eye Associates

Kathleen "Kitty" Gordon, MD

UNC Department of Ophthalmology

Craig Greven, MD

Chair, Department of Ophthalmology
Wake Forest School of Medicine

Leon Herndon, MD

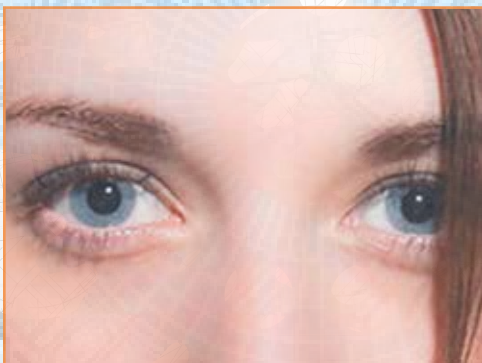
Duke Eye Center

Chip Holmes, JD

Parker Poe

Connie Wilson, BA

Connie Wilson Consulting, Inc.



REGISTRATION

NORTH CAROLINA SOCIETY OF EYE PHYSICIANS AND SURGEONS

Register securely online! Go to www.cvent.com/d/yfq6n5

Name _____ Degree(s) _____

First Name for Badge _____

Last Four Digits of Social Security Number (required for CME) _____

Practice/Affiliation _____

Address _____

City/State/Zip _____

Phone _____

E-mail _____

Guest Name, if attending _____

Emergency Contact Name _____ Phone _____

Dietary Restrictions / Accessibility Needs _____

1. Registration (SC members may attend at the NC member rate. 2016 dues must be current to qualify for member rate.)

	Prior to 8/26	After 8/26
<input type="checkbox"/> Member Physician	\$200	\$250
<input type="checkbox"/> Non-member Physician or PharmD	\$325	\$375
<input type="checkbox"/> Emeritus/Retired Physician	\$100	\$150
<input type="checkbox"/> Mid-level provider	\$100	\$150
<input type="checkbox"/> Resident/Fellow/Medical Student	\$0	\$0

Presentations will be available for download online prior to the meeting date. If you prefer to have a printed, paper copy of the lecture handouts, you may purchase a paper syllabus for \$25; check here to order a paper syllabus. Additional syllabi will not be available at the meeting.

____ Printed Syllabus @ \$25

2. Activities - Pre-registration required for catering and seating purposes; check all that apply.

- ☐ Friday Afternoon Sessions
- ☐ Friday Welcome Reception: Number attending _____
- ☐ Friday Dinner and Program: Number attending _____ registrant @ n/c / _____ guest(s) @ \$50
- ☐ Saturday Retina Club/Case Conference - open to all
- ☐ Saturday Oculoplastics Case Conference - open to all

TOTAL FEES (include \$25 for paper syllabus): \$_____ No refunds after September 16.

Enclosed is check # _____ for \$ _____ payable to NCSEPS, or ☐ Visa ☐ MasterCard

Name as it appears on Credit Card _____

Account # _____ - _____ - _____ Security Code _____ Exp. Date ____/____

Billing Address _____

City/State/Zip _____

Register online, or mail or fax this form to:

NCSEPS

PO Box 27167, Raleigh, NC 27611

FAX (919) 833-2023

NCSEPS
PO Box 27167
Raleigh, NC 27611

IMPORTANT! REGISTRATION INFORMATION

NORTH CAROLINA SOCIETY OF EYE PHYSICIANS AND SURGEONS 2016 ANNUAL MEETING

September 23-24, 2016 • Grandover Resort • Greensboro, NC

